

Republic of the Philippines  
Office of the President

**JHMC**

JOHN HAY MANAGEMENT CORPORATION

## PROCUREMENT OF SIGNAGES FOR THE CJH GATES AND TRAILS

DRAFTED BY:

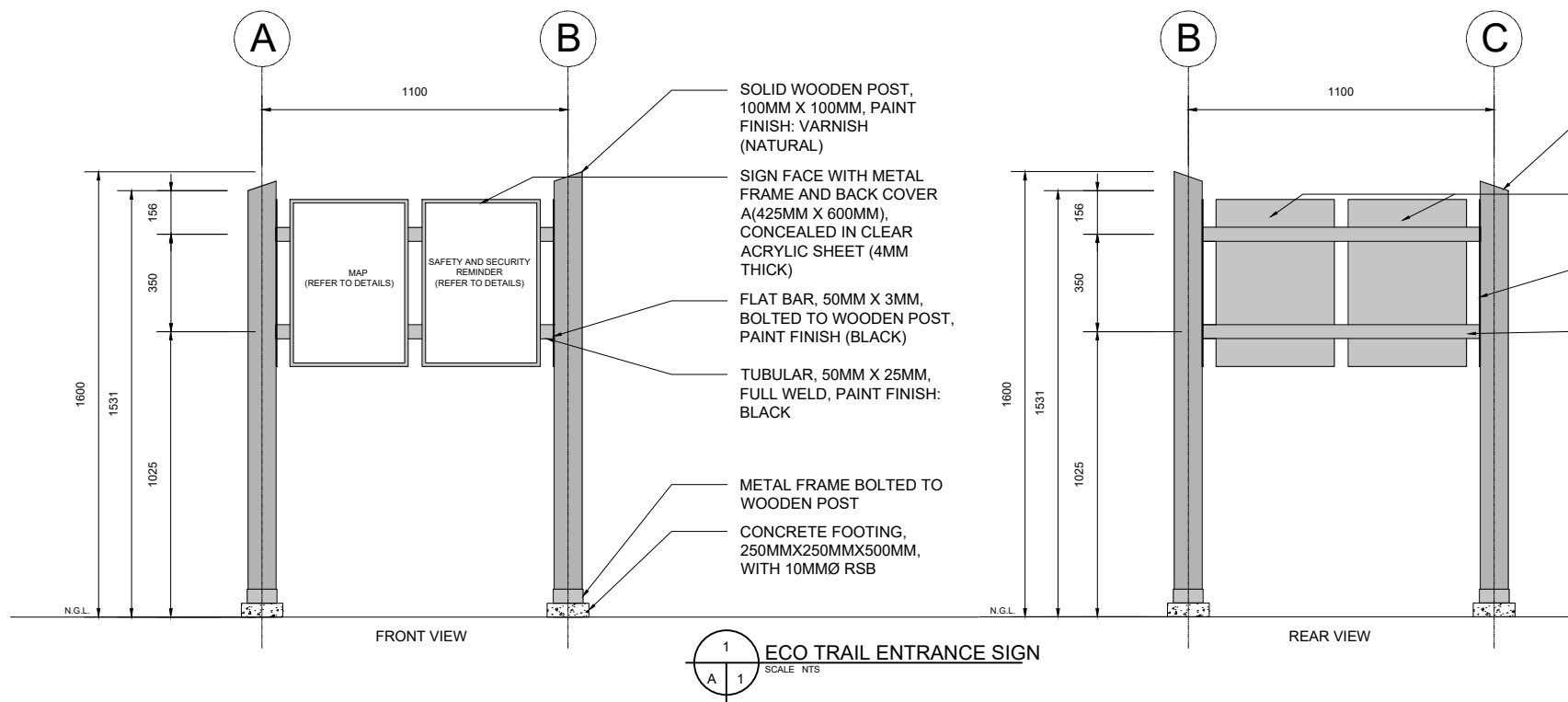
  
ENGR. LARA MELISSA C. ANTONIO  
CIVIL/STRUCTURAL ENGINEER

CHECKED BY:

ARCH. LUZVIMINDA M. NIGOS-PANGANIBAN  
PROJECT MANAGER

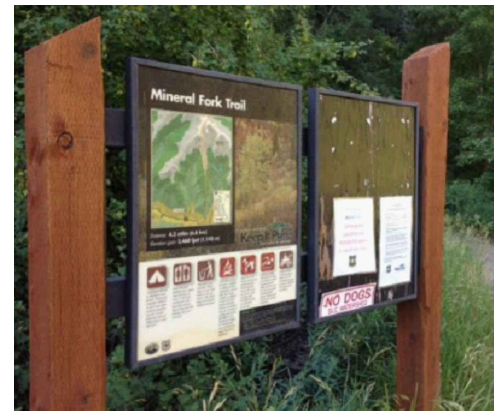
APPROVED BY:

ENGR. BOBBY V. AKIA  
ENVIRONMENT AND ASSET MANAGEMENT DEPARTMENT MANAGER



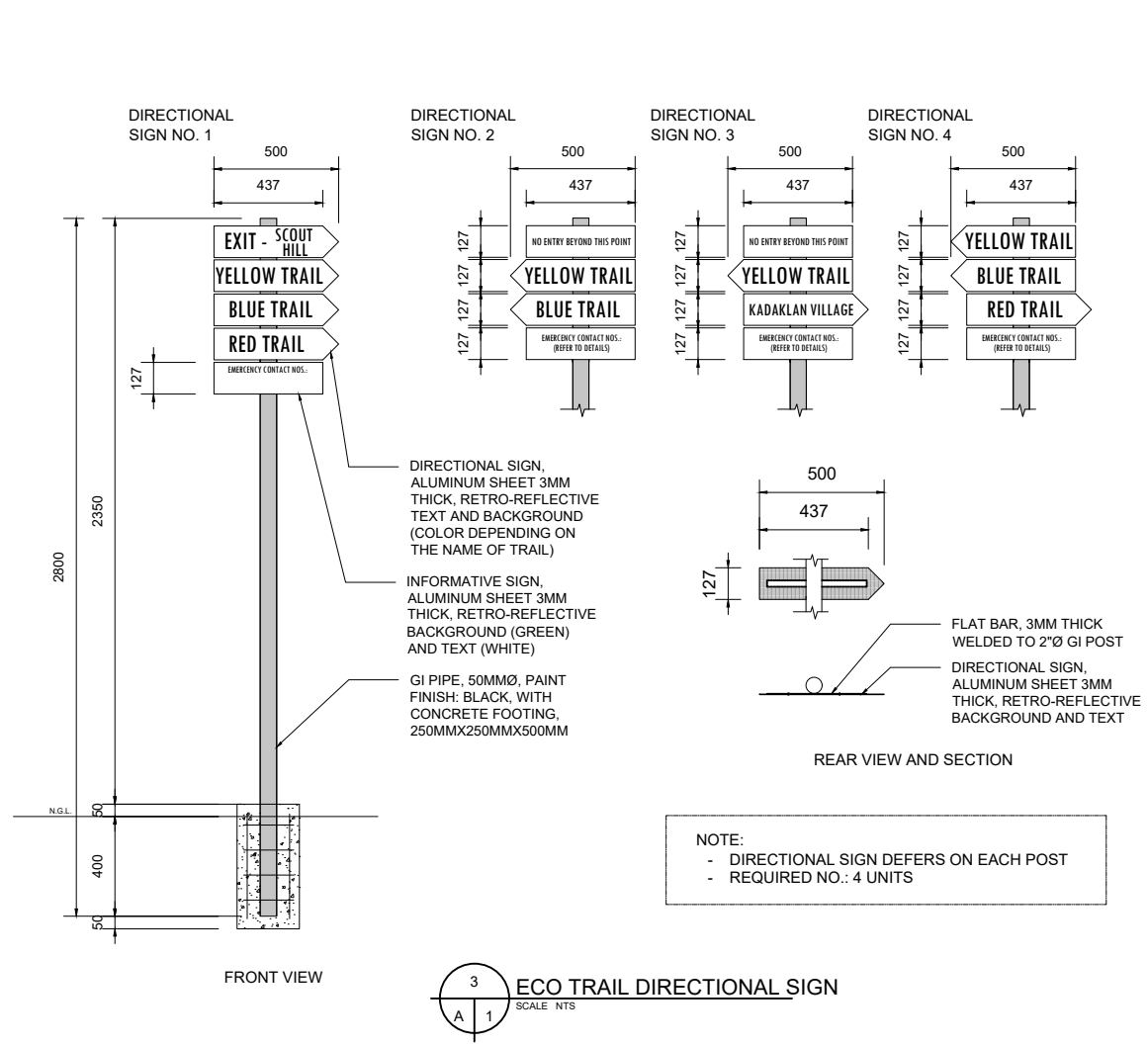
1  
A 1  
ECO TRAIL ENTRANCE SIGN  
SCALE: NTS

- SOLID WOODEN POST, 100MM X 100MM, PAINT FINISH: VARNISH (NATURAL)
- SIGN FACE WITH METAL FRAME AND BACK COVER A(425MM X 600MM), CONCEALED IN CLEAR ACRYLIC SHEET (4MM THICK)
- FLAT BAR, 50MM X 3MM, BOLTED TO WOODEN POST, PAINT FINISH (BLACK)
- TUBULAR, 50MM X 25MM, FULL WELD, PAINT FINISH: BLACK
- METAL FRAME BOLTED TO WOODEN POST
- CONCRETE FOOTING, 250MMX250MMX500MM, WITH 10MMØ RSB



SAMPLE PERSPECTIVE VIEW

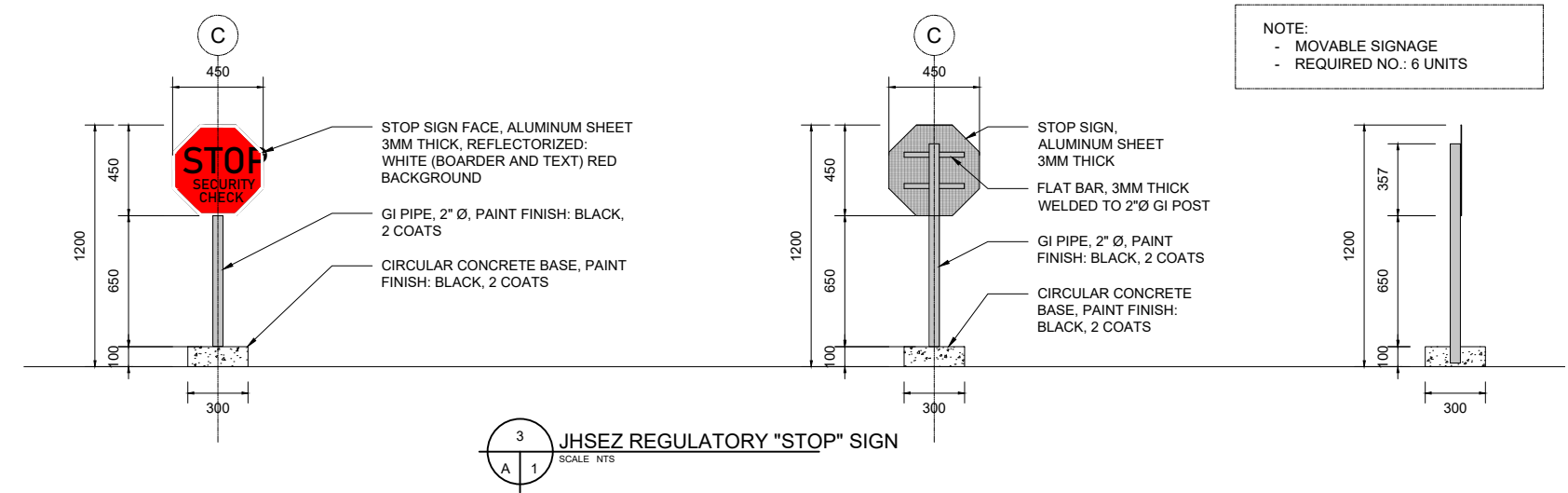
NOTE:  
 - TYPICAL DETAIL FOR TRAIL ENTRANCE SIGNAGE  
 - MAP DEFERS ON EACH SIGNAGE  
 - REQUIRED NO.: 4 UNITS  
 - ATTACHED IMAGE IS FOR REFERENCE ONLY



3  
A 1  
ECO TRAIL DIRECTIONAL SIGN  
SCALE: NTS

- DIRECTIONAL SIGN, ALUMINUM SHEET 3MM THICK, RETRO-REFLECTIVE TEXT AND BACKGROUND (COLOR DEPENDING ON THE NAME OF TRAIL)
- INFORMATIVE SIGN, ALUMINUM SHEET 3MM THICK, RETRO-REFLECTIVE BACKGROUND (GREEN) AND TEXT (WHITE)
- GI PIPE, 50MMØ, PAINT FINISH: BLACK, WITH CONCRETE FOOTING, 250MMX250MMX500MM

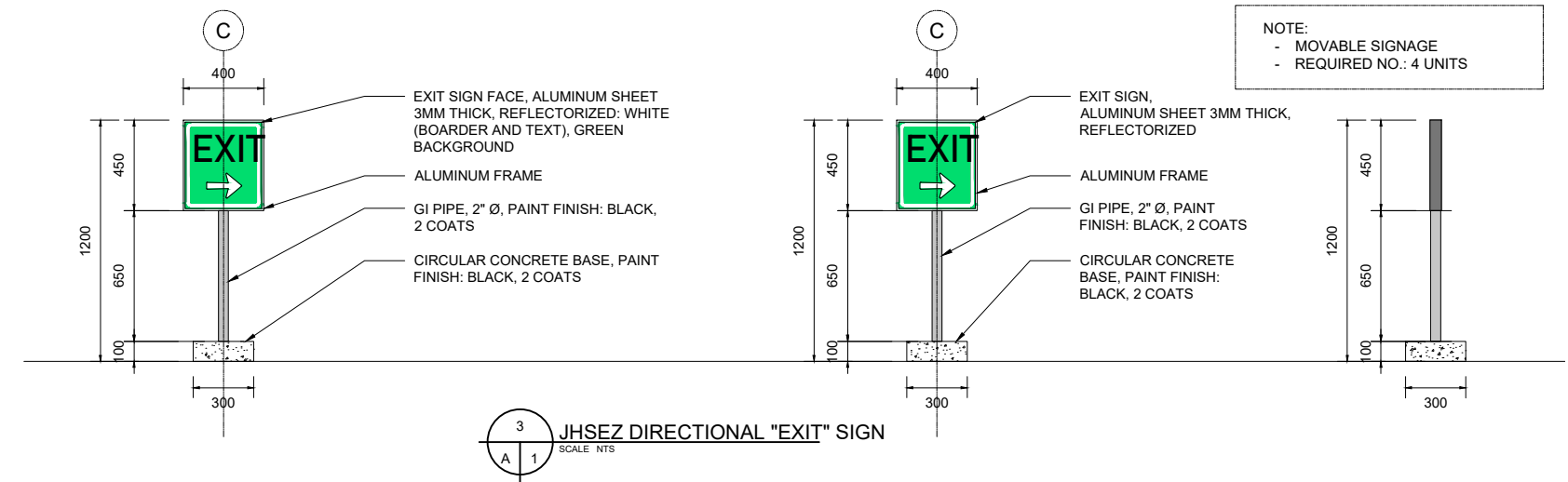
NOTE:  
 - DIRECTIONAL SIGN DEFERS ON EACH POST  
 - REQUIRED NO.: 4 UNITS



3  
A 1  
JHSEZ REGULATORY "STOP" SIGN  
SCALE: NTS

- STOP SIGN FACE, ALUMINUM SHEET 3MM THICK, REFLECTORIZED: WHITE (BOARDER AND TEXT) RED BACKGROUND
- GI PIPE, 2" Ø, PAINT FINISH: BLACK, 2 COATS
- CIRCULAR CONCRETE BASE, PAINT FINISH: BLACK, 2 COATS

NOTE:  
 - MOVABLE SIGNAGE  
 - REQUIRED NO.: 6 UNITS



3  
A 1  
JHSEZ DIRECTIONAL "EXIT" SIGN  
SCALE: NTS

- EXIT SIGN FACE, ALUMINUM SHEET 3MM THICK, REFLECTORIZED: WHITE (BOARDER AND TEXT), GREEN BACKGROUND
- ALUMINUM FRAME
- GI PIPE, 2" Ø, PAINT FINISH: BLACK, 2 COATS
- CIRCULAR CONCRETE BASE, PAINT FINISH: BLACK, 2 COATS

NOTE:  
 - MOVABLE SIGNAGE  
 - REQUIRED NO.: 4 UNITS